

PROJECT

RICKETTS STUDIO

TYPE

NEW CONSTRUCTION

LOCATION

PETERBOROUGH, NH

DATE

2010

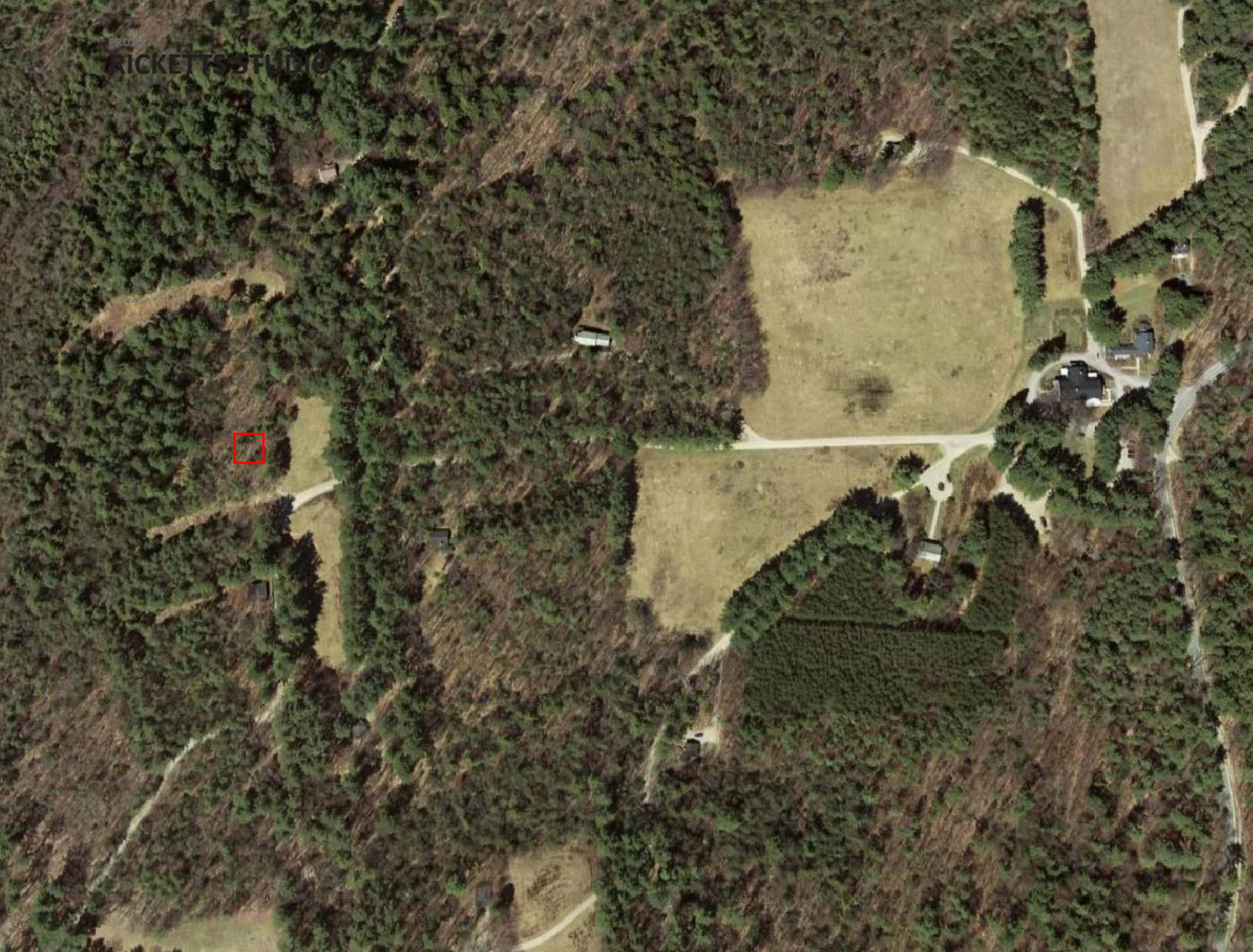
The Ricketts Studio emerged as a response to place. Designed during and artist in residency in the Fall of 2010 at the prestigious MacDowell Colony, the studio emerged as an extension of a small existing gazebo. Sited, named and donated by a former artist that cherished the majesty of that particular site, the architecture did not match the majesty of the place. This need along with the philosophical desire to bring modernity to the avant-garde complex that supports the cutting edge of all arts, the studio provided an opportunity to offer an architectural work that matched the ambition of the institution. Engulfing the entire building is a four sided canopy of misters. Variably controllable, the field emits a delicate spray of water. Deployable by side, intensity, frequency and temperature, the water becomes an active facilitator from both outside and in. As a cooling system, a cloud, a veil, a privacy screen or a wall, the infrastructure responds to the occupant and the weather. Temperature changes the effect allowing the full spectrum from rainbow mist to ice. The collective composition is a enigmatic foil of and collaboration with place.



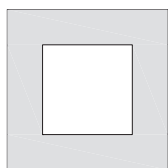
BORDEN PARTNERSHIP

1918 LAUDERDALE STREET
HOUSTON, TEXAS 77030

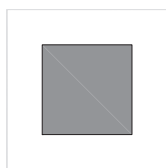
www.bordenpartnership.com



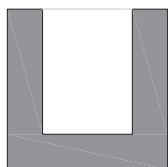
RICKETTS STUDIO LOCATION ALONG VIEW CORRIDOR TO MOUNT MONADNOCK



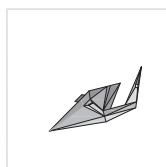
PERIMETER



COURTYARD



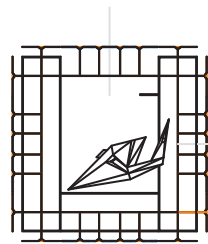
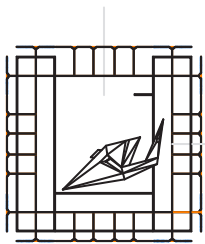
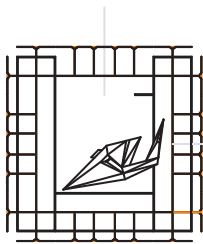
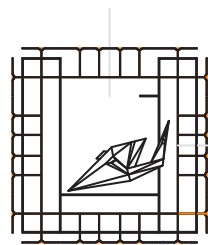
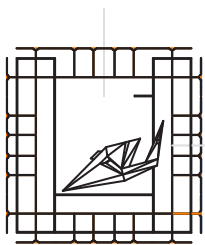
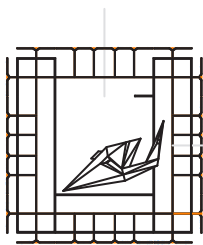
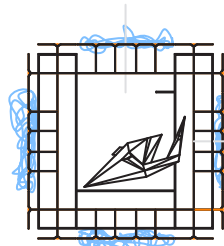
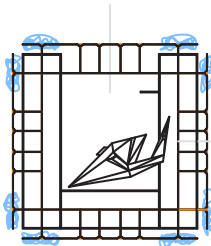
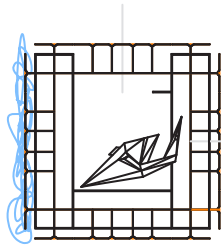
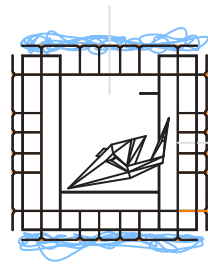
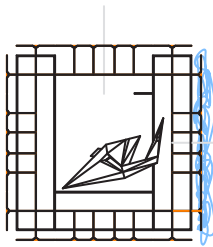
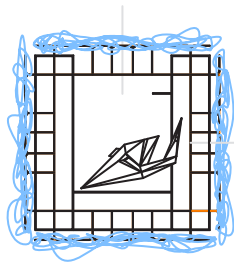
VOID

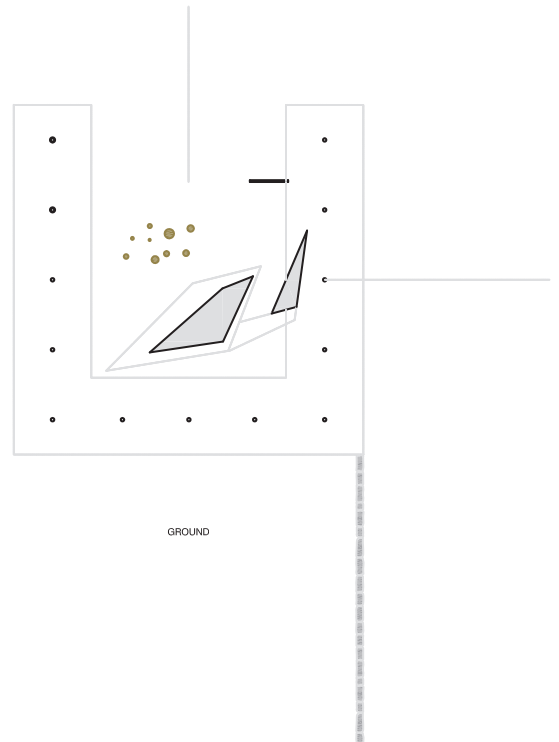
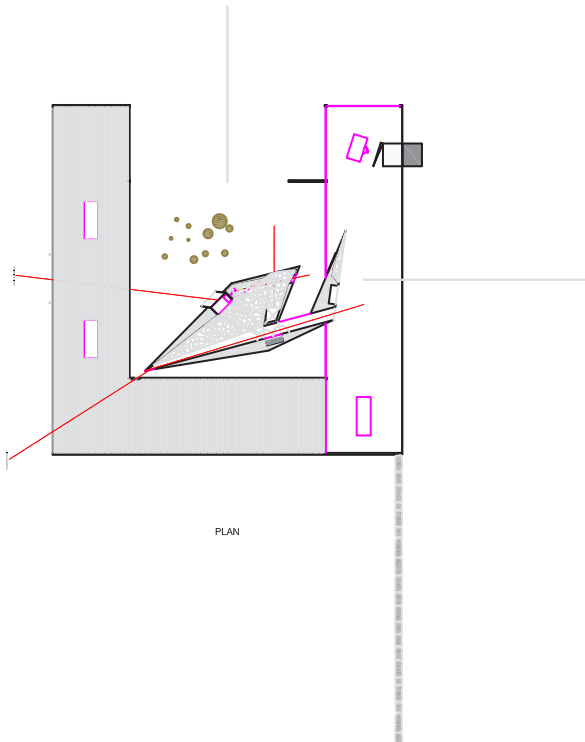
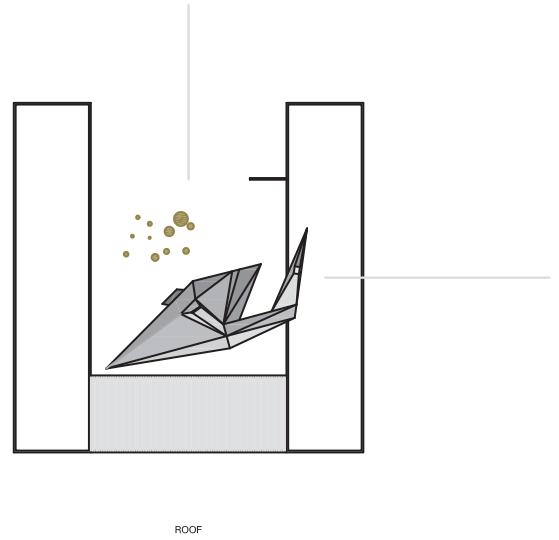
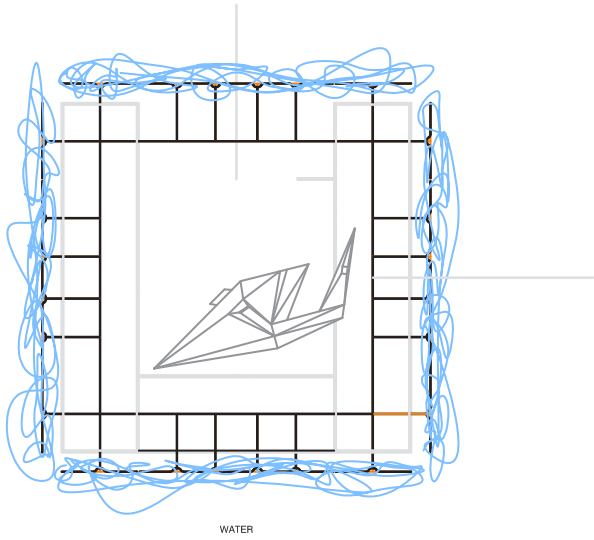


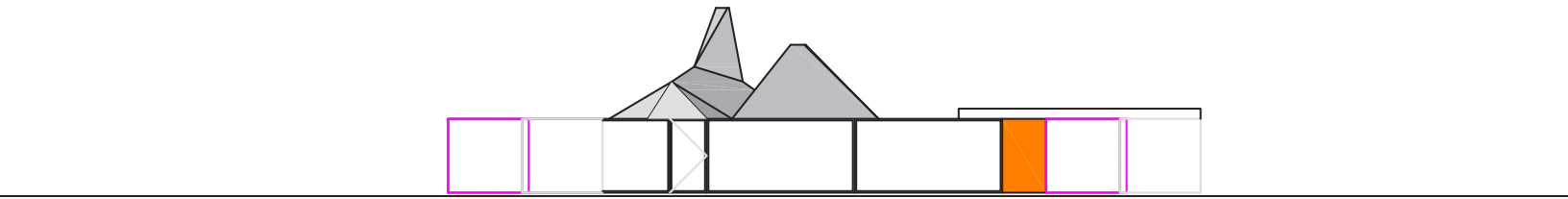
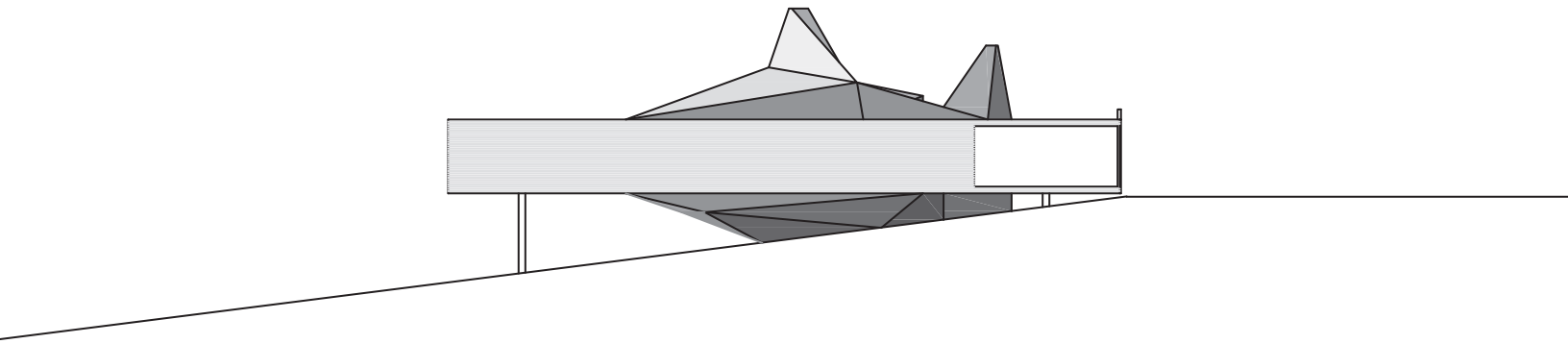
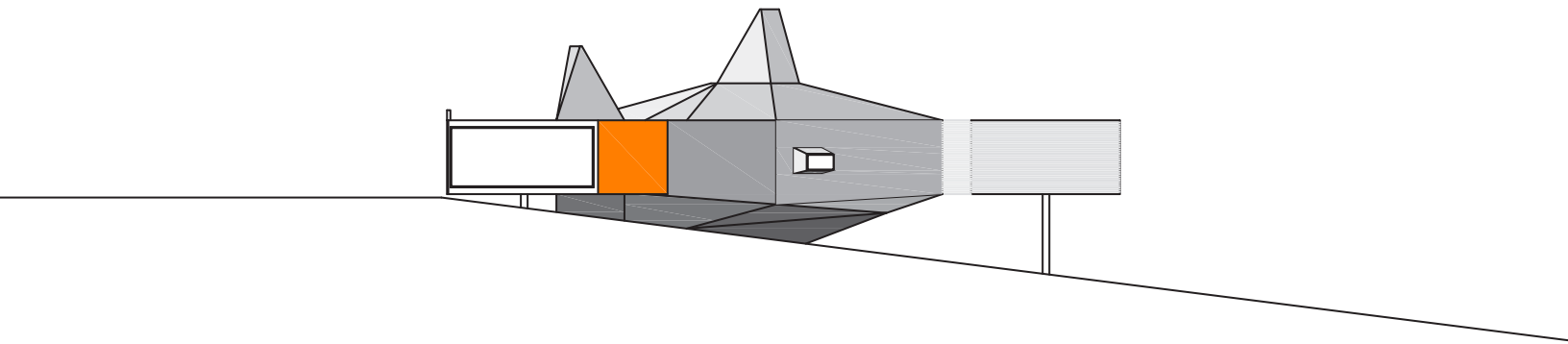
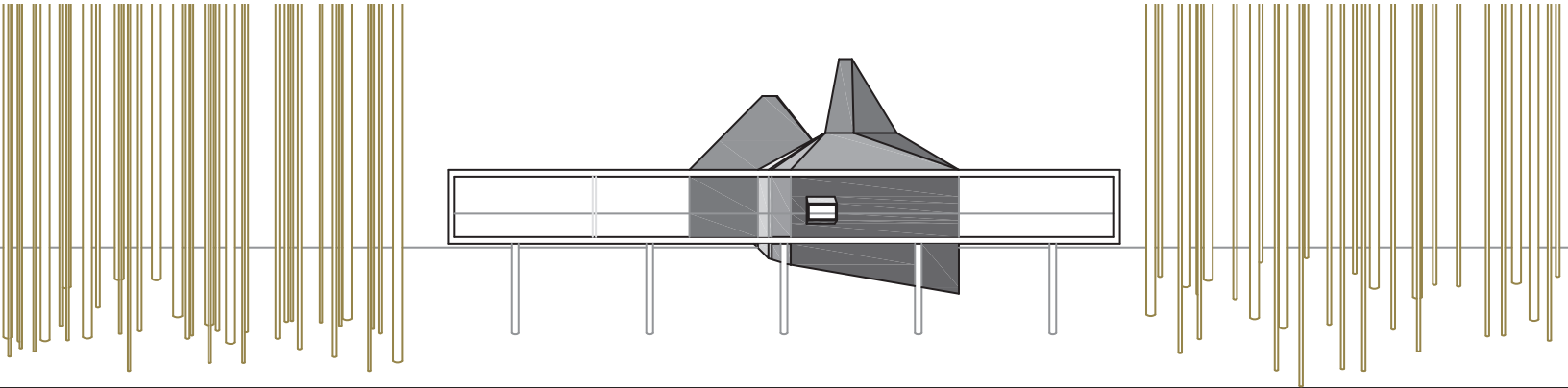
VIEW FIGURED OBJECT

Entirely glass, the panelized surface is segmented in large operable panels that can slide laterally, extending past the face of the building and nest in a cantilevered armature in the trees. When open the studio becomes porch allowing for a total reconfiguration dependent upon weather and the artist that occupies. The flexibility increases the diversity.

The inner faceted figure is cast-in-place radiant heated concrete. The angles orient to the movement of time overlain with the rituals of living and contrast the rigid orthogonality of the surrounding studio. The withdraw from the studio, but one that is nestled on the ground and within the frame of its engulfing workspace allowing for a simultaneous retreat from ones work while being surrounded by it.







ELEVATIONS - VIEW | SIDE | SIDE | APPROACH ELEVATION

BORDEN PARTNERSHIP

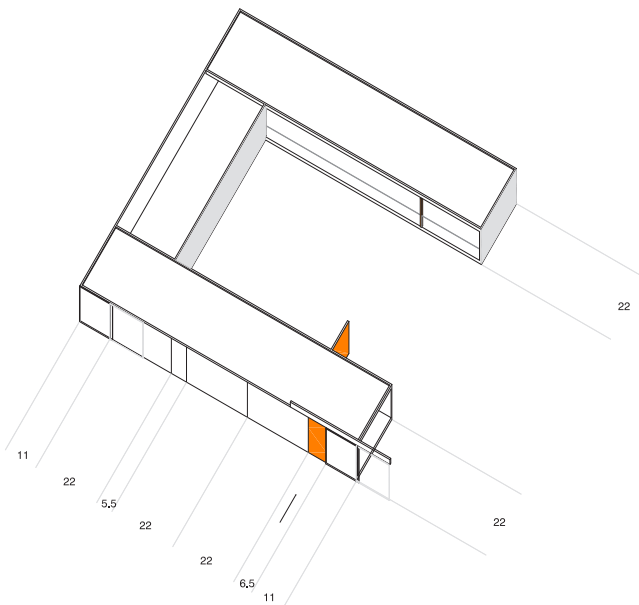
1918 LAUDERDALE STREET
HOUSTON, TEXAS 77030



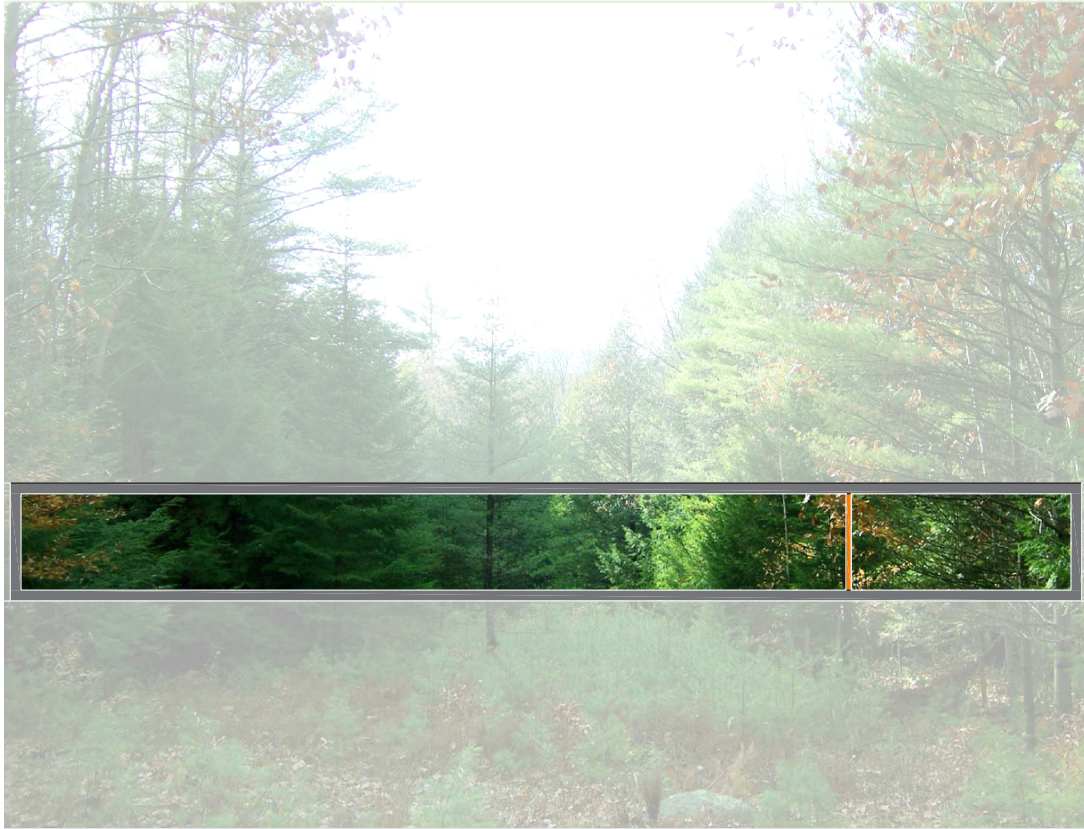
PROJECT
RICKETTS STUDIO



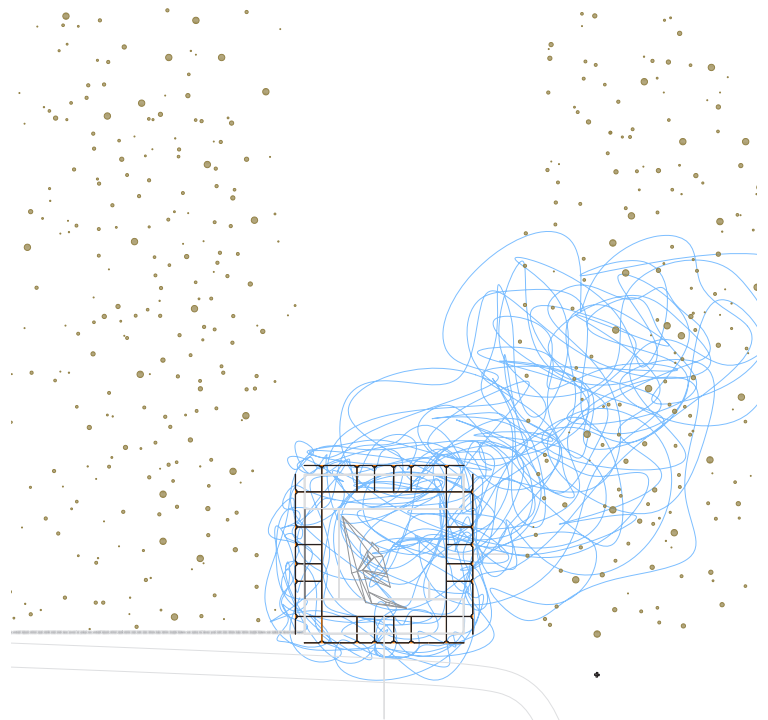
APPROACH VIEW



STUDIO FIGURE



FRAMED FOREST VIEW - FOCAL CORRIDOR



SITE PLAN: STUDIO AS MIST CLOUD